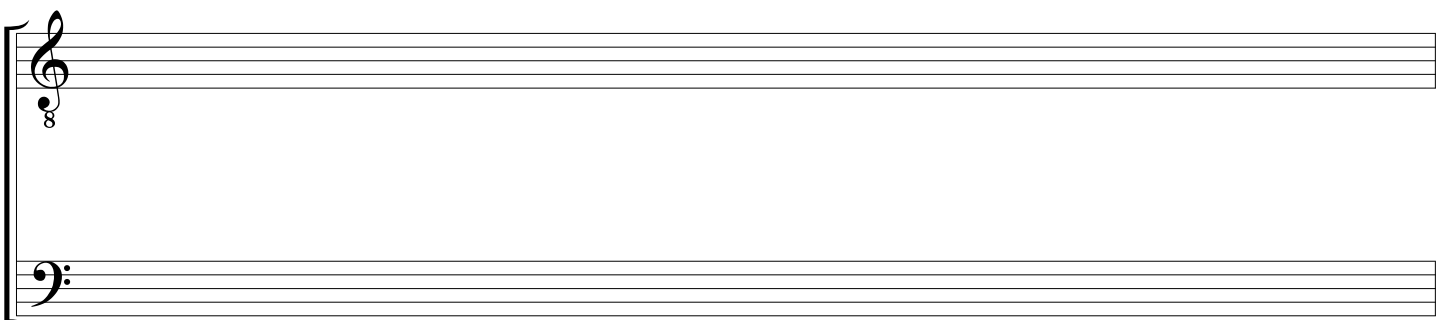
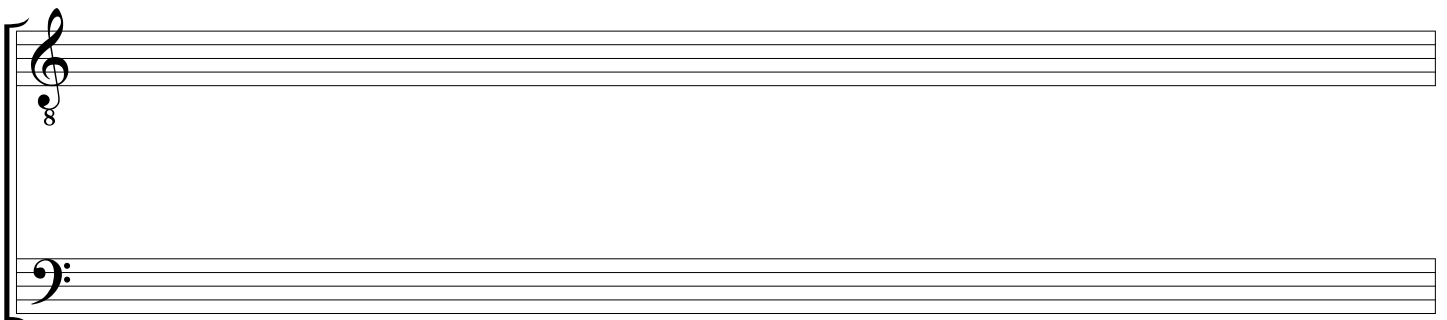
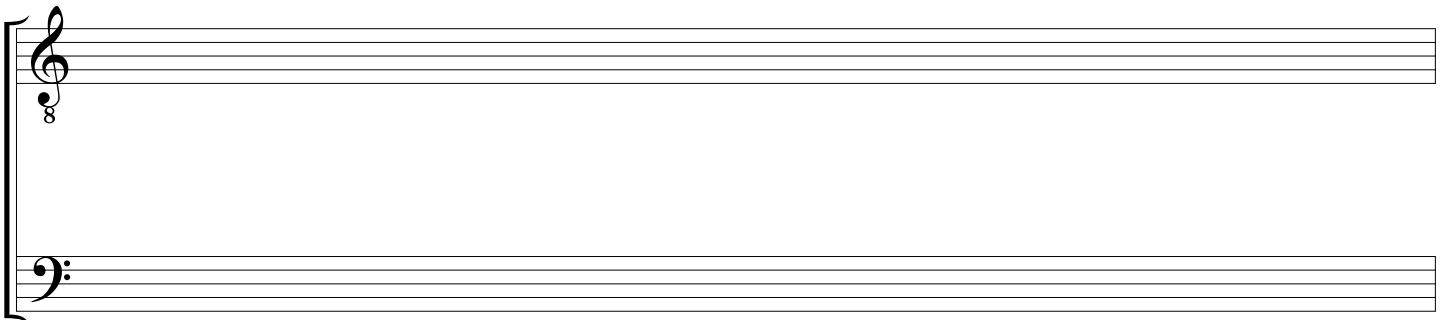
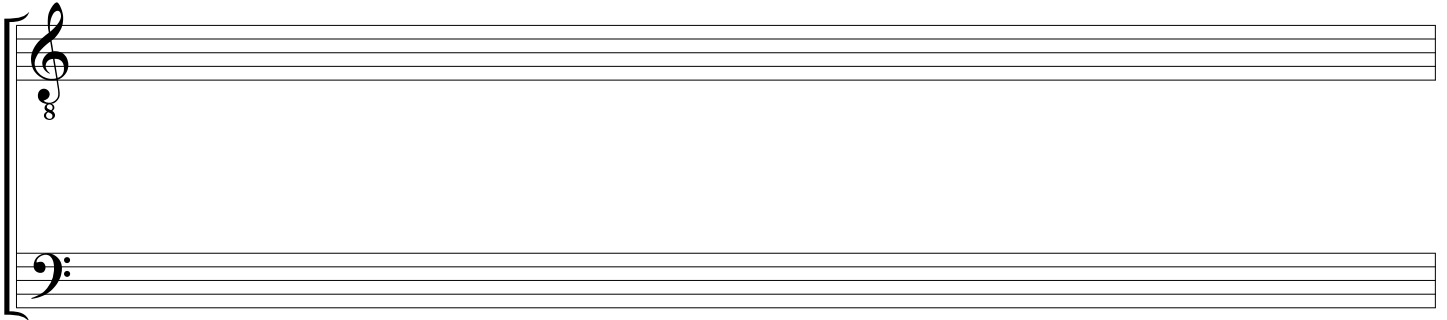


Date _____

Title _____

Page # _____



A musical score consisting of two staves. The top staff uses a treble clef and the bottom staff uses a bass clef. Both staves have a repeat sign at the end. The top staff contains two notes: a quarter note on the second line and a quarter note on the second space. The bottom staff contains two notes: a quarter note on the second line and a quarter note on the second space.